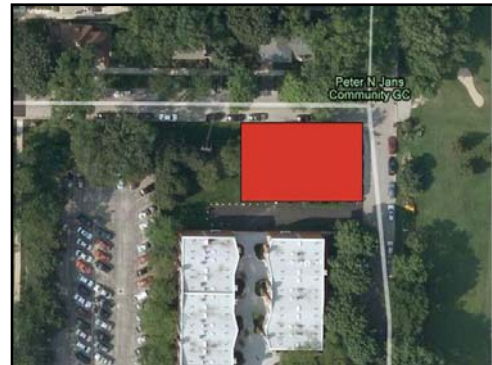


Investment / Redevelopment Opportunity in Evanston



- Parcel Size / Building Size:** • 4,966 square feet / 1,820 square feet
- Zoning:** • R5: General Residential District
- Frontage:** • Approximately 95.5 feet of frontage along W. Chancellor St.
• Approximately 52 feet of frontage on N. Bryant Ave
- Public Bid Offering** • Invitation to bid and bidding details available soon
- Comments:** • Corner lot in a tree-lined residential neighborhood
• Improved with single story brick building
• Across street from Peter N. Jans Community Golf Course
• Two blocks from CTA Purple Line Central Station
• Two blocks east of Northwestern University's Ryan Field

For information call
+1 866 323 0640
Jones Lang LaSalle Americas, Inc.
www.ctarealestate.com

