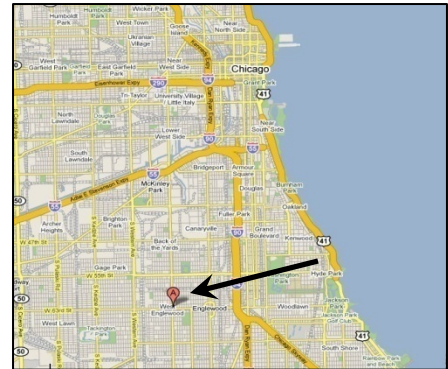
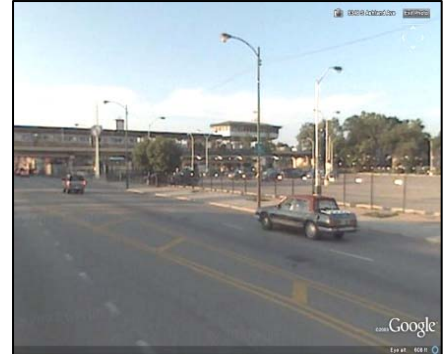
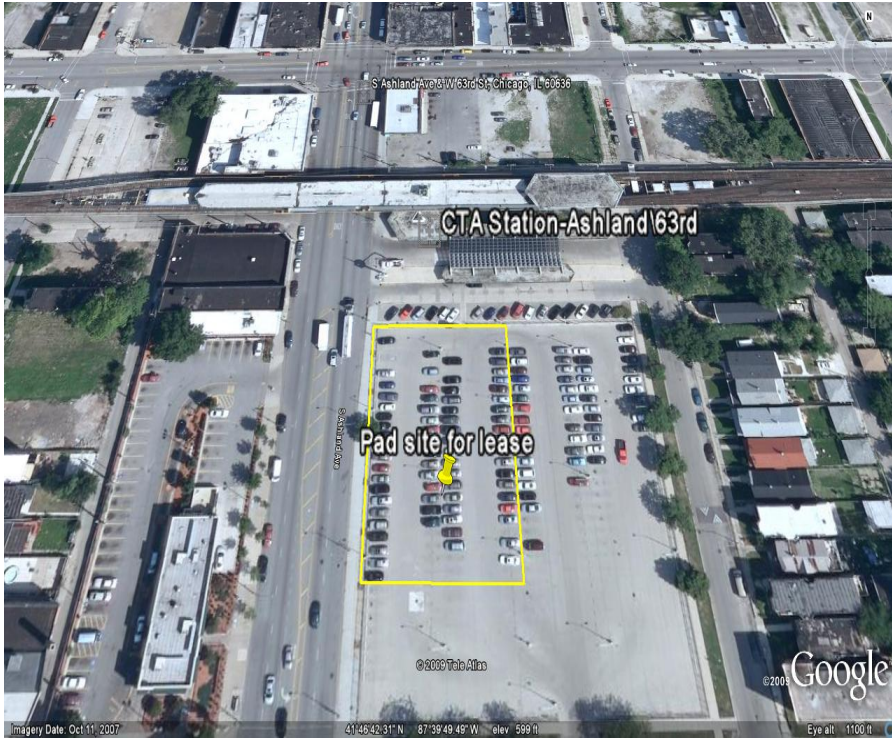




**JONES LANG
LASALLE**

CTA Ashland / 63rd Station Chicago, IL

Transit Oriented Development Opportunity



- Parcel Size:**
 - 26,000 +/- SF Pad Site
- Zoning:**
 - B3-2
- Frontage:**
 - Approximately 200 feet of frontage along S. Ashland
- Public Bid Offering**
 - Available soon
- Comments:**
 - Adjacent to CTA Ashland / 63rd Green Line Station (1,800 daily riders)
 - Station for three CTA bus routes (60,000 riders daily on routes)
 - 23,600 cars travel daily on S. Ashland.
 - Across from McDonalds Restaurant

For information call
 +1 877 282 7335
 Jones Lang LaSalle Americas, Inc.
 www.ctarealestate.com



Real value in a changing world